

## 500kHz, 4.5A Step-Up Current Mode PWM Converter

### General Description

The EMH7080 is a current mode boost DC-DC converter. Its PWM circuitry with built-in 80mΩ power MOSFET make this regulator highly power efficient. The internal compensation network also minimizes as much as 6 external component counts. The non-inverting input of error amplifier connects to a 0.6V precision reference voltage and internal soft-start function can reduce the inrush current.

The EMH7080 is available in E-SOP-8L package and provides space-saving PCB for the application fields.

### Features

- Adjustable Output up to 9V
- Internal Fixed PWM frequency: 500kHz
- Precision Feedback Reference Voltage: 0.6V ( $\pm 2\%$ )
- Internal 80mΩ, 4.5A, 12V Power MOSFET
- Shutdown Current: 0.1μA
- Over Temperature Protection
- Over Voltage Protection
- Adjustable Over Current Protection: 0.5A ~ 4.5A
- Package: E-SOP-8L

### Applications

- Chargers
- LCD Displays
- Digital Cameras
- Handheld Devices
- Portable Products

### Typical Application

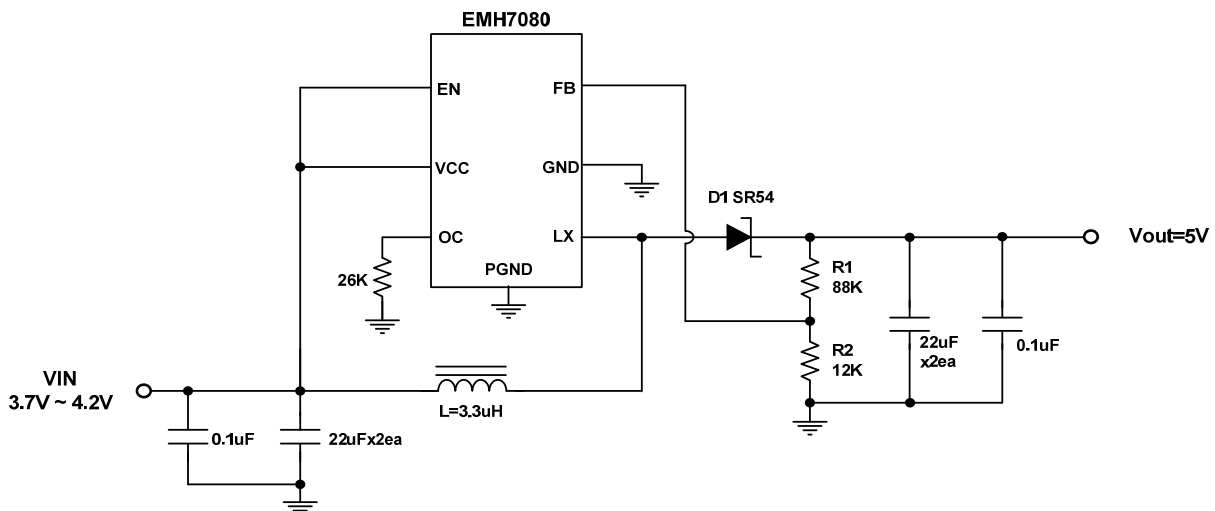
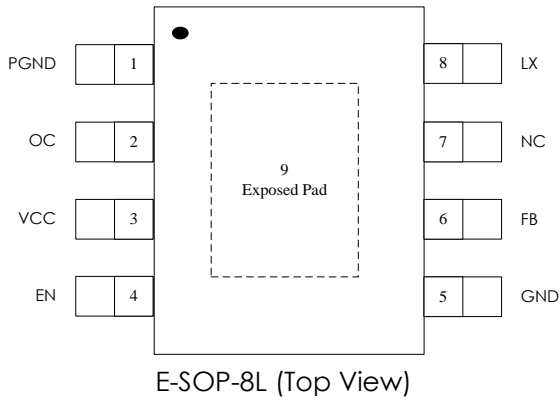


Fig. 1 EMH7080 application circuit

Package Configuration



EMH7080-00SG08NRR

- 
- 00 Adjustable Output
- 
- SG08 E-SOP-8L Package
- NRR RoHS & Halogen free package  
Commercial Grade Temperature  
Rating: -40 to 85°C  
Package in Tape & Reel

Order, Mark & Packing information

Package	Vout(V)	Product ID	Marking	Packing
E-SOP-8L	Adjustable	EMH7080-00SG08NRR		Tape & Reel 3K units

Functional Block Diagram

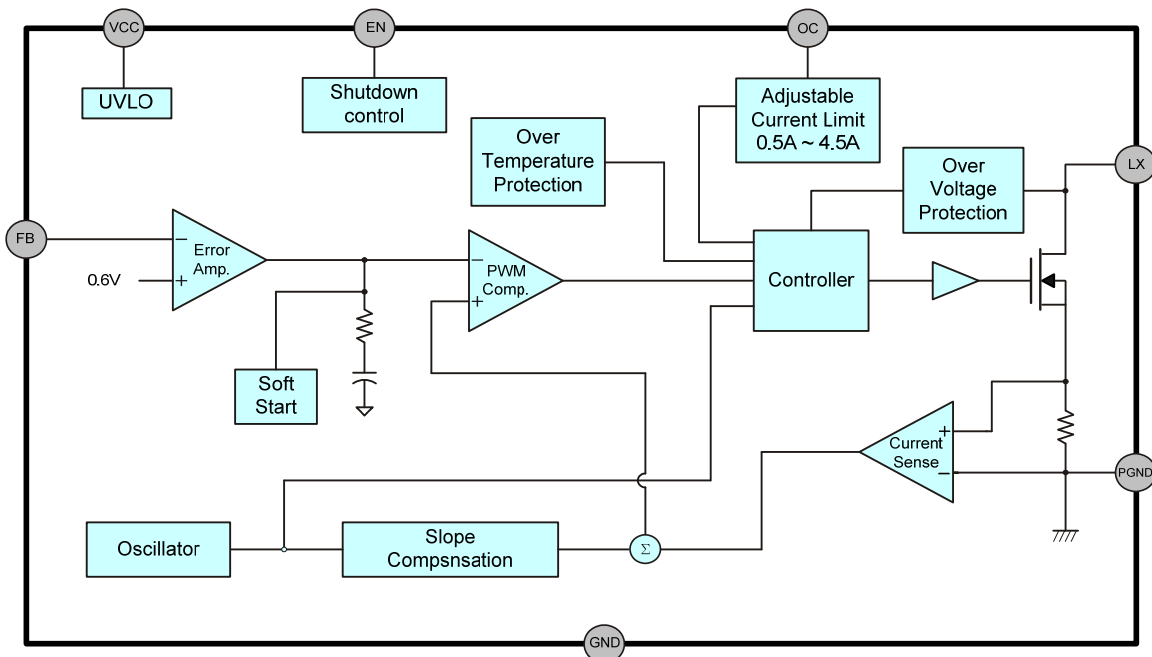


Fig. 2